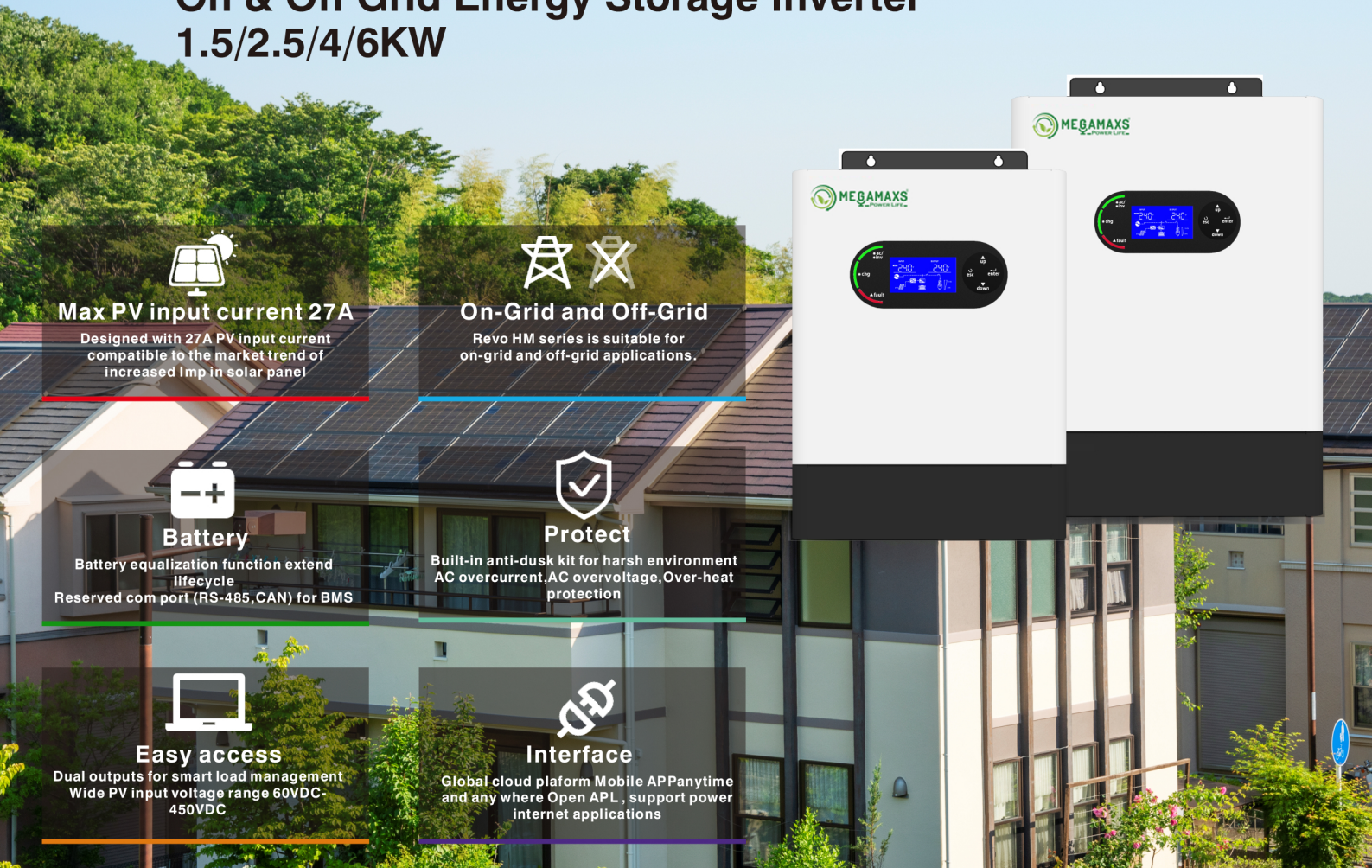


# REVO HM series

## On & Off Grid Energy Storage Inverter

### 1.5/2.5/4/6KW



**Max PV input current 27A**  
Designed with 27A PV input current compatible to the market trend of increased Imp in solar panel

**On-Grid and Off-Grid**  
Revo HM series is suitable for on-grid and off-grid applications.

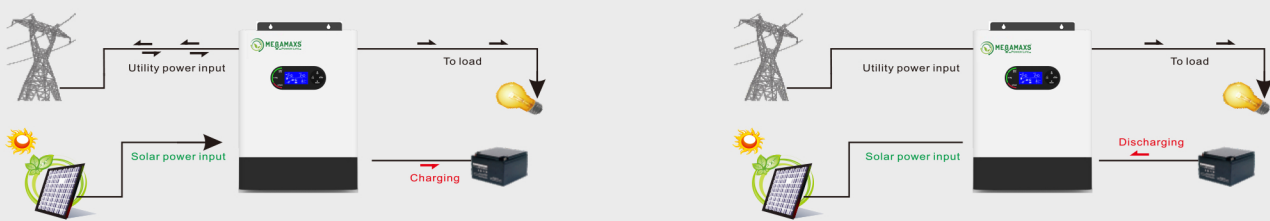
**Battery**  
Battery equalization function extend lifecycle  
Reserved com port (RS-485, CAN) for BMS

**Protect**  
Built-in anti-dusk kit for harsh environment  
AC overcurrent, AC overvoltage, Over-heat protection

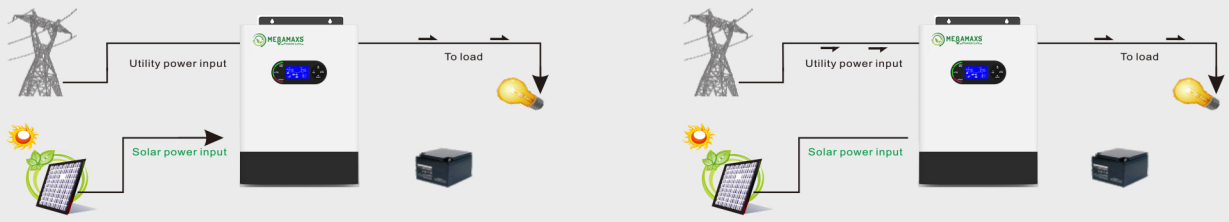
**Easy access**  
Dual outputs for smart load management  
Wide PV input voltage range 60VDC-450VDC

**Interface**  
Global cloud platform Mobile APP anytime and any where Open APL, support power internet applications

#### With battery connected



#### Without battery connected



Technical Specification	REVO HM series			
Rated power	1500VA/1500W	2500VA/2500W	4000VA/4000W	6000VA/6000W
<b>AC Input</b>				
AC voltage	230VAC			
Voltage Range	170-280VAC(For Personal Computers);90-280VAC (For Home Appliances)			
Frequency Range	50Hz/60Hz(Auto sensing)			
<b>AC Output</b>				
Surge power	3000VA	5000VA	8000VA	12000VA
Voltage regulation(Batt Mode)	230VAC±5%			
Rated frequency	50/60Hz			
Efficiency(Peak)	up to 93.5%			
Automatic switching time	10ms (For Personal Computers);20ms (For Home Appliances);			
<b>SOLAR CHARGER &amp; AC CHARGER</b>				
Maximum PV Array Open voltage(V)	500VDC			
Maximum PV Array power	2000W	3000W	5000W	6000W
MPPT voltage range(V)	120~500VDC			
Maximum input current	27A			
MPPT tracker/strings	1			
Maximum solar charge current	80A		120A	
Maximum AC charge current	60A		100A	
Maximum charge current	80A		120A	
<b>Battery</b>				
Battery voltage	12VDC	24VDC	24VDC	48VDC
Floating Charge voltage	13.5VDC	27VDC	27VDC	54VDC
Overcharge Protection	16VDC	33VDC	33VDC	63VDC
Battery type	lithium /Lead-acid			
<b>Protection&amp; Feature</b>				
AC overcurrent,	Yes			
AC overvoltage	Yes			
Over-heat protection	Yes			
Smart load management	Yes (for 4/6k)			
<b>General Parameter</b>				
Operation temperature	- 25°C ~ 60°C			
Relative humidity	0 ~95% (non-condensing)			
Altitude 2,000m	(>2,000 Derating)			
Dimensions D x W x H (mm)	356x255x104.5		434x311x126.5	
Weight (kg)	5.3	5.5	8.5	9
<b>Display and communication</b>				
Display	Touch key+LCD			
Interface	Standard:RS485,CAN ; Opt: Wifi ,Bluetooth			
Safety standard	EN/IEC 62109-1,EN/IEC 62109-2			